

 CUTTING

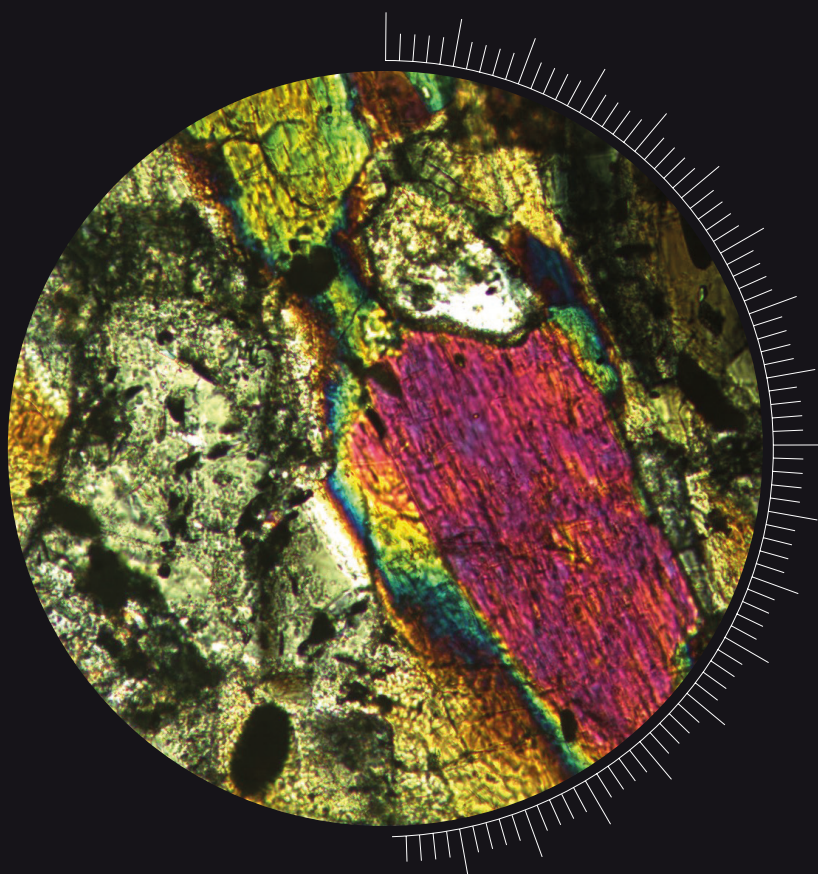
 MOUNTING

 POLISHING

 MICROSCOPY

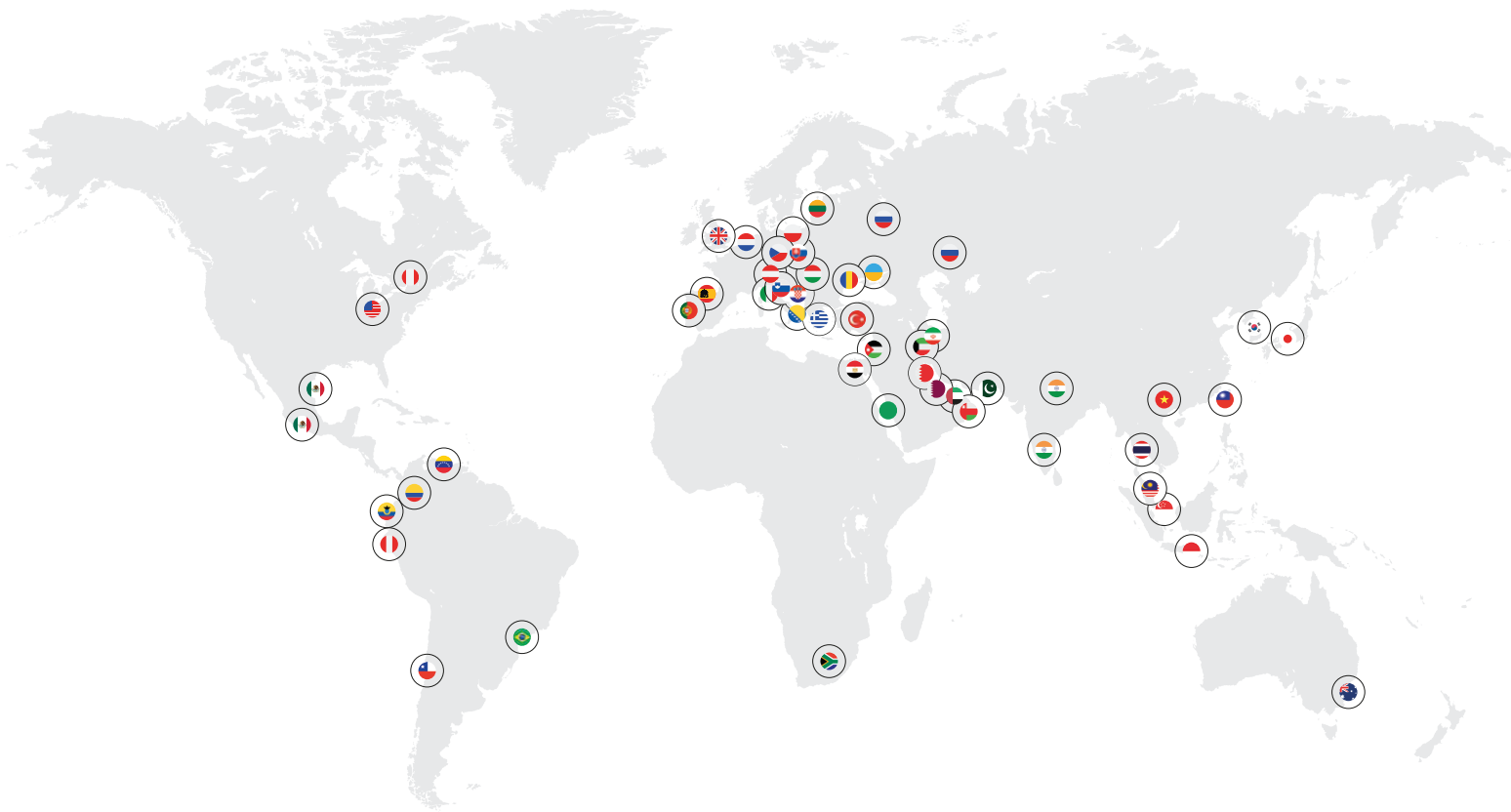
# PRESI

## GEOLOGICAL RANGE



# PRESI

## WORLDWIDE



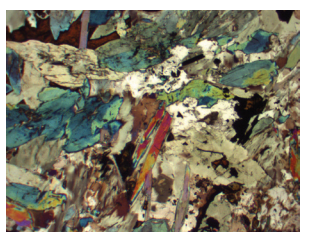
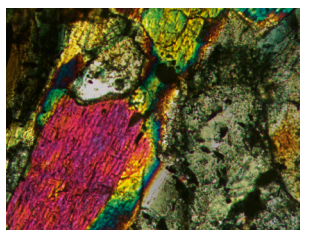
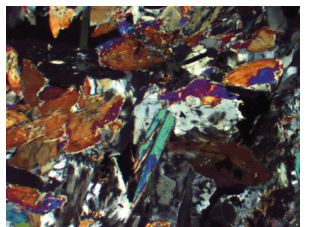
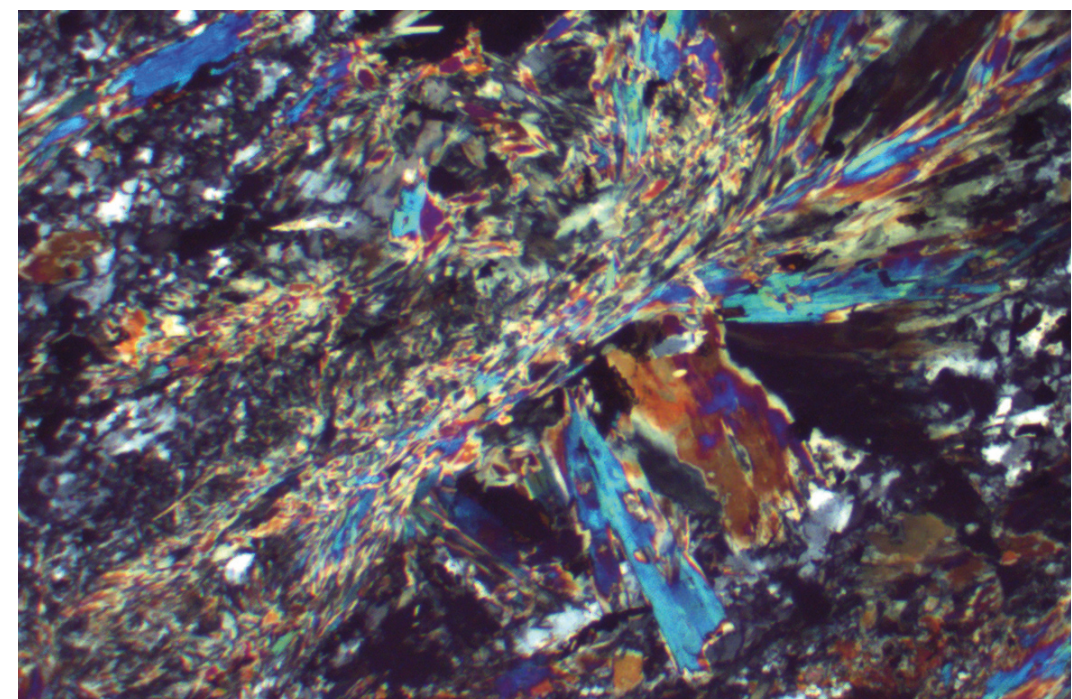
FRANCE | SWITZERLAND | CHINA | ROMANIA | GERMANY | and more than 40 distributors

## EDITORIAL

Lithopreparation is a set of essential techniques to many sectors: geology, archeology, mining research, etc.

With its range dedicated to the preparation of thin sections, PRESI constantly brings additional solutions, services and expertise to its litho-preparer customers. It is through collaborations with our customers that our range has been developed and it is always within this environment that we develop and evolve our offer.

Our network and our ability to work with our customers create our strength, and we are proud to have built this relationship of trust allowing ever more innovation and development.





# THIN SECTION PREPARATION PROCESS BY PRESI

## 1 CUTTING

The rock is cut to remove the sample for analysis.



## 2 SHAPING

The sample is worked until the desired shape and dimensions are achieved: the "sugar cube".



## 3 LAPPING

The cube surface to be glued is worked to obtain perfect flatness.



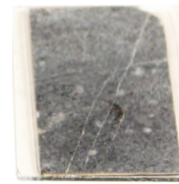
## 4 GLUING

The cube is glued to the slide.



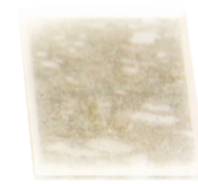
## 5 THINNING

The sample is thinned to the desired dimension, for observation or polishing.



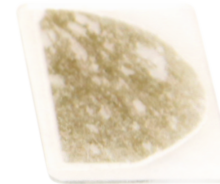
## 6 GRINDING

The sample is pre-polished.



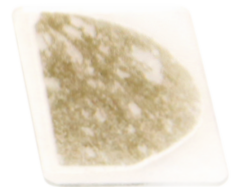
## 7 POLISHING

An option stage during which the sample is polished to remove residual scratches.



## 8 SUPER FINISHING

The sample is polished using nanoparticulate abrasives for specific analyzes.



**MECATOME  
T260**  
p. 6-7



**GEOTOME  
DUAL**  
p. 8-9



**LE CUBE**  
p. 15



**GEOPRESS**  
p. 12



**GEOTOME  
DUAL**  
p. 8-9



**GEOTOME  
DUAL**  
p. 8-9



**MECATECH  
300 SPC**  
p. 18-19



**VIBROTECH  
300**  
p. 20



**GEOTOME  
DUAL**  
p. 8-9



**MINITECH  
RANGE**  
p. 16-17



### IMPREGNATE

Working with tricky, fragile or brittle samples? It's possible to impregnate under vacuum using Poly'Vac at different stages of the preparation process.



**DIAMOND  
WIRE SAWS**  
p. 10-11



**MECATECH  
300 SPC**  
p. 18-19



**POLY'VAC**  
p. 13

### + OBSERVE



**CONTROL  
THIN SECTION**  
p. 21



**MICROSCOPES**  
p. 21



**PRESI VIEW  
MEASUREMENT**  
p. 22

### + ALL FOR PETROGRAPHY



**CONSUMABLES &  
ACCESSORIES**  
p. 23



CUTTING 1

MECATOME  
T260

Ref. 51200

A reliable, robust cutting machine. Particularly suitable for rock sample cutting, MECATOME T260 can cut cylindrically with diameters up to 95mm. MECATOME T260 provides maximum flexibility and rapid set up through the provision of an easily accessible cutting table that allows quick sample clamping in either the vertical or horizontal plane with the provided vises with clamping system.



↕

520 mm  
closed hood

↔

610 mm

↙

820 mm

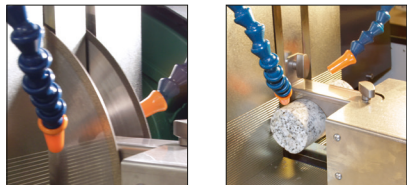
⚖

110 kg

CE

OPTIONS

- Dual cutting disk which allows sections to be cut in a single stage.
- Pneumatic vice.




CHARACTERISTICS

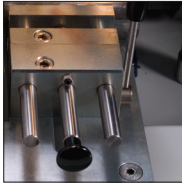
HOOD	
Type	PETG enclosure with metal hinges
Safety	Interlock switch keeps hood locked during
MOTORIZATION - POWER SUPPLY	
Power supply	2200 W
Alimentation	220 V / Single phase / 50 Hz
Control of the motor	Frequency inverter
CUT-OFF WHEELS	
Type of cut-off wheels	Resin bonded and metal bonded
Cut-off wheel size range	250 and 300 mm
Rotation speed	3200 or 3800 RPM
Arbor size	25,4 mm
CONTROL	
Control interface	Push buttons
CUTTING	
Cutting modes	Manual
Type of table	Treated steel table in L
Holders	Vices in horizontal or vertical position-Kopal
LUBRICATION - COOLING	
Pump & tank	External-25 L
Type of lubrication	External recirculating system
Method of directing pumped coolant	2 alignable nozzles
Type of filtration	100µm washable filter cloth
ERGONOMICS	
Internal lighting	LED
Spray nozzle for cleaning	Integrated

ACCESSORIES

VICES AND HOLDERS




Ref. 51213  
Left quick clamping vice  
Height 45mm




Ref. 51214  
Right quick clamping vice  
Height 45mm

SYSTÈMES DE BRIDAGE

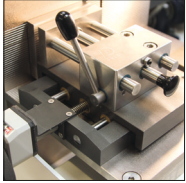


Ref. 50613  
Box of Kopal holders




Ref. 50616  
Kopal holding

TABLES




Ref. 51212  
Manual X-axis table


OTHERS ACCESSORIES




Ref. 51006  
Base cabinet (small size)  
W : 770 mm  
D : 880 mm  
H : 855 mm



Ref. 51230  
Cleaning set integrated



Ref. 51250  
Variable speed option 1500 RPM to 4000 RPM



Ref. 51621  
Set of 3 filters for coolant tank



- CUTTING 1
- SHAPING 2
- THINNING 5
- GRINDING 6

# GEOTOME DUAL

Ref. 62830

Geotome dual has two working zones. One allowing cutting of rock samples, the other pre-polishing of thin sections.

+

TWO WORKING ZONES

ADAPTABILITY: MADE-TO-ORDER

SAMPLE HOLDERS



- ↑

510 mm

closed hood
- 950 mm

opened hood
- ↔

1150 mm
- ↖

780 mm
- 📦

170 kg

CE

## EXTERNAL RECIRCULATING SYSTEM INCLUDED

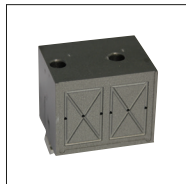


## ACCESSORIES

\*Others dimensions on request



Ref. 62831  
GEOTOME DUAL vacuum system Automatic purge



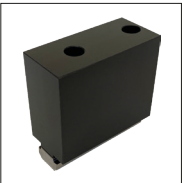
Ref. 62837  
Vaccum holder for cutting 2 thin sections 30x45mm\*



Ref. 62842  
Manual micrometric vacuum holder for cutting  
Travel: 40 mm  
Precision: 0,1mm\*  
Capacity : 2 thin sections 30x45mm\*



Ref. 62832  
Ceramic vacuum holder for grinding  
Capacity : 4 thin sections 30x45mm\*

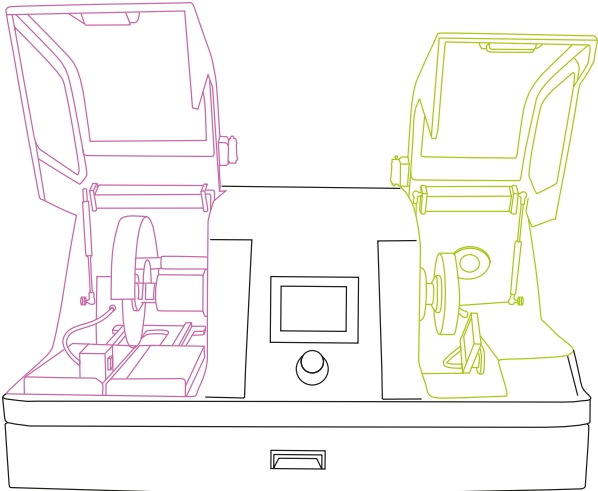
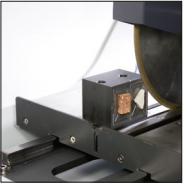


Ref. 62846  
Holding block for manual cutting

## DIAMOND GRINDER 250 mm



## FIXED VACUUM VICE



## DIAMOND CUP WHEEL



## CHARACTERISTICS

HOODING - INTERIOR ENVIRONMENT	
Type	Metal & PETG frame
Safety	The grinding area and the unused area are locked during motor rotation
MOTOR POWER - ELECTRICAL SUPPLY	
Power / Electrical supply	2200 W / 220 V / Single phase / 50 Hz
Motor piloting	Frequency controller
GRINDER	
Grinder type	Diamond
Grinder size	Cutting: diamond disk Ø 250mm Rectification: cup wheel Ø 175mm
Rotation speed	1000 to 3000 RPM
Shaft diameter	25,4 mm
CONTROL	
Control interface	Colour touch screen
Protection by access code	Activated
Communication / Machine piloting interface	Modbus
CUTTING - RECTIFICATION	
Cutting method	Manual
Type of movement	Cutting: manual on longitudinal table Rectification: manual with micrometric wheel
Travel of Y axis	On the cutting table: 300mm
Travel of X axis	Rectification sample rack: 35mm
Dimension of cutting table	260 x 300mm
Type of table	Cutting: micro bead-blasted stainless steel table Rectification: aluminium sample rack with ceramic sole
Clamps / Vacuum clamping	A T-slot (12mm) compatible with all clamping systems on the market
Sample / Cutting	Max height : 50 mm 2 sections 30x45 mm or 1 section 60x45 mm*
Sample / Rectification	4 sections 30x45 mm or 1 section 60x45mm*
LUBRICATION - COOLING	
Pump & Tray	External - 60L
Type of lubrication	Pumped
Configuration of lubrication points - Cooling	Cutting: grinder housing Rectification: directional lubrication nozzle
Type of filter	100 µm washable fabric filter
ERGONOMICS	
Interior lighting	LED
Cleaning shower	integrated
No load noise level	< 70db

## GEOTOME DUAL

CUT / PREPARE / THIN

The cutting side uses LM diamond discs with a diameter of 250 mm.

With its manual-movement longitudinal table, it allows you to cut rock and prepare the sample.

Once the cube is glued to the thin section, it is possible thin it to a fixed or variable measurement thanks to the mobile or non-mobile vacuum vice which fixes onto the table.

## GEOTOME DUAL

GRINDING

The grinding area of GEOTOME DUAL allows you to pre-polish up to 4 thin sections simultaneously.

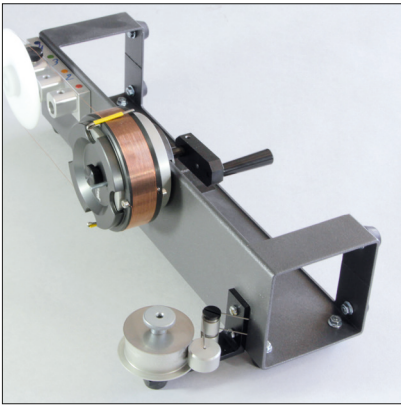
They are held by a vacuum sample rack and are rectified thanks to a 175mm diameter diamond head cup wheel with resinoid, metallic or vitrified binder.



DIAMOND WIRE SAWS

Diamond wire saws for cutting **rock samples**. They are particularly recommended for cutting delicate samples such as silicium or glass.

The low forces applied allow samples to be cut without damage.

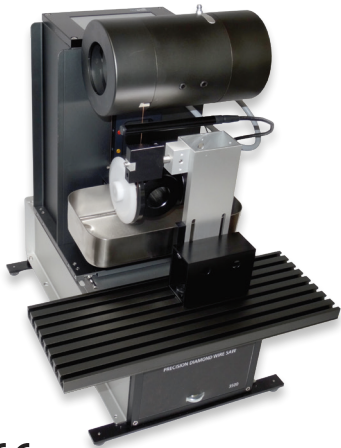


Saw 3400  
Ref. 52030



CE  
310 mm  
290 mm  
450 mm  
11,3 kg

Saw 3500 BASE  
Ref. 52010



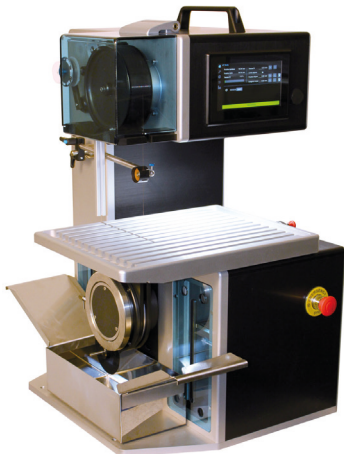
CE  
460 mm  
345 mm  
410 mm  
13,8 kg

Saw 3500 PREMIUM  
Ref. 52020



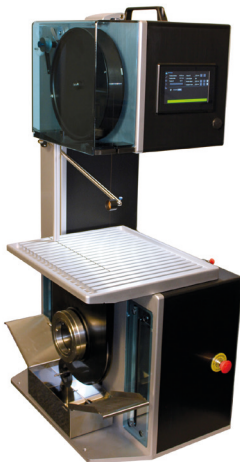
CE  
460 mm  
345 mm  
410 mm  
13,8 kg

Saw 4500  
Ref. 52040



CE  
860 mm  
480 mm  
590 mm  
85 kg

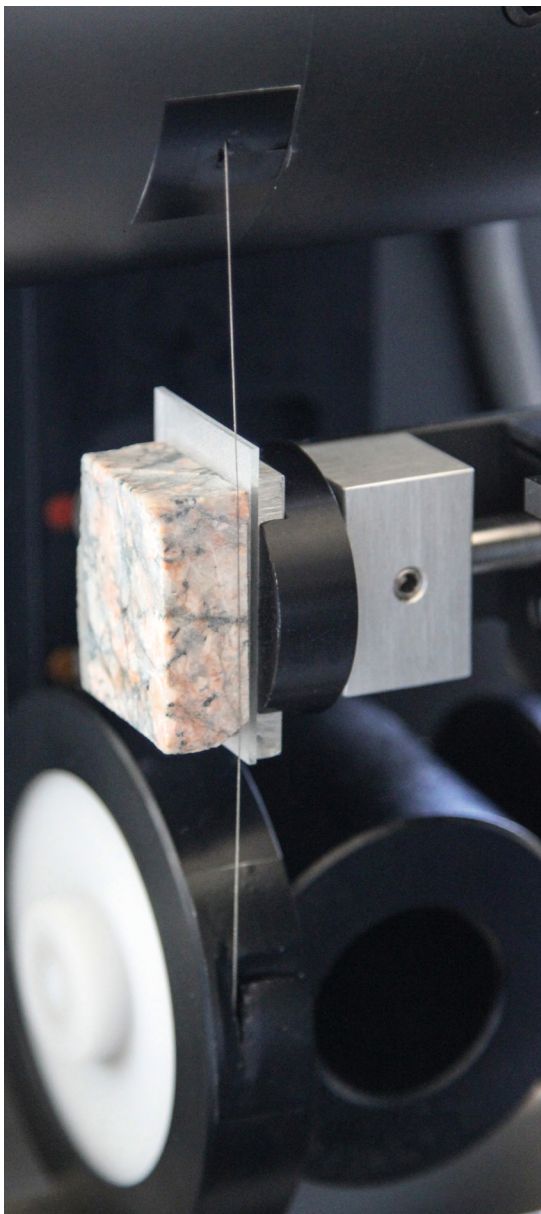
Saw 6500  
Ref. 52050



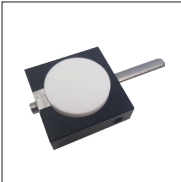
CE  
1200 mm  
480 mm  
650 mm  
105 kg

CHARACTERISTICS

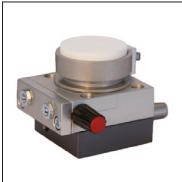
	3400	3500 base	3500 premium	4500	6500
POWER SUPPLY - CONTROL					
Voltage 230 V, 50-60 Hz	✓	✓	✓	✓	✓
Access code	✓	✓	✓		
Mains cable	✓	✓	✓	✓	✓
Power supply USB 5V	✓	✓	✓	✓	✓
Touchscreen	✓	✓	✓	✓	✓
WiFi	on request	on request	on request	on request	on request
Timer	✓	✓	✓	✓	✓
WORKING AREA					
Height adjustment		✓	✓		
ADVANCEMENT					
Gravity (wire)		✓	✓	✓	✓
Scale / Weight (sample)	✓				
CUTTING DEPTH					
Maximum in mm	50	60	35/52	150	300
Slider with electronic end-of-cut stop			✓		
SAMPLE HOLDER					
Slotted table		✓	✓	✓	✓
Micrometric table	✓	en option	✓	en option	en option
30mm diameter with 5 ceramic plates	✓	✓	✓	en option	en option
30mm diameter 90° with 5 ceramic plates	option	option	option	option	option
Turning deck			✓		
LUBRICATION					
Dampening device	✓	✓	✓	✓	✓



ACCESSORIES



Sample holder



Turning deck



X-Y table



Micrometric table



Dual vice



Goniometer  
2 axis



Digital camera on  
request



Torque wrench



Cutting liquid



Set of 5 ceramic  
plates



Wax sticks



Drum



GLUING 4

## GEOPRESS

Ref. 62820

GEOPRESS allows you to **glue up to 20 samples** simultaneously under individual weights of 600g to 1.6kg.

It is the only press on the market which allows progressive, controlled temperature increase. GEOPRESS works at temperatures up to 110°C.

**PROGRAMMABLE  
ADJUSTABLE TEMPERATURE**

CE  
370 mm  
605 mm  
290 mm  
33 kg



## CHARACTERISTICS

Number of samples	20 sections 30x45 or 10 sections 60x45
Size of heating plate	130 x 500mm
Weight-block weight	600g
Heating power	750 W
Maximum temperature	110°C
Multilingual touch screen	✓
Programmable	✓
Timer	✓
Gradient management	✓
Security Access	Activable
Power supply	220 V AC 50 Hz

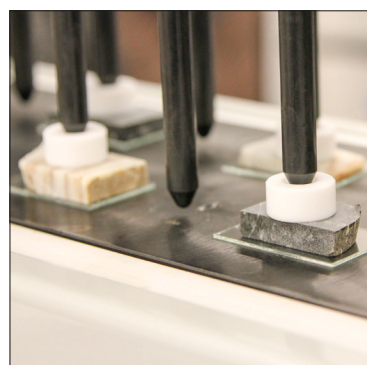
## ACCESSORIES



Ref. 62821  
10 overweights of 1kg



Ref. 62822  
20 Teflon weight distribution stands



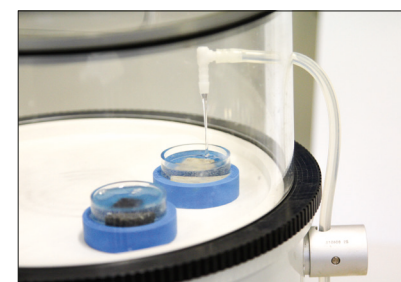
IMPREGNATE

## POLY'VAC

Ref. 53600

Vacuum mounting system, POLY'VAC allows rock **stabilisation by impregnation** whatever the thin section preparation stage.

Piloted by a touch screen, POLY'VAC is programmable (several levels of vacuum, time lag between a minute and several hours). This system includes a resin distribution dispenser.



CE  
340 mm with lid  
Ø outside 340 mm  
Ø inside 250 mm  
10 kg

**TURNTABLE  
PROGRAMMABLE**



## CHARACTERISTICS

Vacuum level	Up to - 90 kPa
Power supply	220 V single-phase 50/60 Hz 110 V on request

## ACCESSORIES

Ref. 04900  
Kit of 100 paper cups + 100 wooden stirrers  
Ref. 53605  
50 protection sheets  
Ref. 53606  
Pipes and plastic nozzles (set of 50)

MOUNTING

## PRESSURE DEVICE

Ref. 04300

The pressure vessel for mounting improves the performance of KM series acrylic mounting resins, makes KM-U transparent, and reduces the shrinkage phenomenon.



CE  
70 mm  
220 mm  
4,5 liters  
2 bar





# + EXPERTISE & QUALITY 100% MADE IN FRANCE



PRESI

The only French manufacturer of preparation machines dedicated to material analysis.  
Products designed by our R&D department.  
Production of the consumables, assembly of the machines and machining parts made in our workshops.

LAPPING 3

## LE CUBE

Ref. 66250

The CUBE is a **manual polishing machine** with diameters from 200-250mm. It has a high-torque motor which can turn clockwise and anticlockwise.

The polishing plate has two rotating speeds (150 and 300 RPM).

**The CUBE in particular allows manual honing of cubes.**



SPACE-  
SAVING  
EASY TO USE  
ROBUST



CE



700 mm  
opened hood



398 mm



420 mm

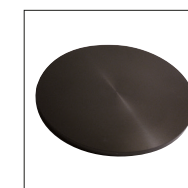


25 kg

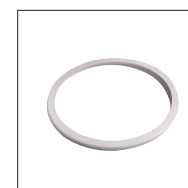
## CHARACTERISTICS

Diameter of the polishing platen	200 or 250mm
Rotation speed	150 & 300 rpm
Direction of rotation	Clockwise & counter-clockwise
Multi jet water spray	✓
Removable polishing platen	✓
Motor power	180 W
Frequency inverter	✓
High-torque motor	✓
Speed and torque compensation	✓
Immediate stop of the platten (safety)	✓
Progressive acceleration	✓
Transparent protection hood	✓
Splash guard	✓
Simplified maintenance & after sales use	✓
Power supply	230 V/50-60 Hz

## ACCESSORIES



**Almagtech platen**  
Ref. 67822 Ø 200mm  
Ref. 67820 Ø 250mm



**Circular paper holder (metal)**  
Ref. 56054 Ø 200mm  
Ref. 56055 Ø 250mm



**Precise Holder for thin section**  
30x45mm  
Ref. 62862



**Precise Holder for thin section**  
28x48mm  
Ref. 62863



MINITECH

Ø 200 to 250mm // Ø 250 to 300 mm

Ideal for manual lapping of « sugar cubes ». MINITECHs are top-of-the-range, manual polishing machines. Equipped with removable bowls, they are very easy to clean. Hood and tank are made of composite material, preventing any corrosion.

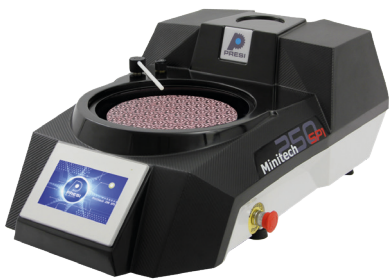


USER-FRIENDLY  
RELIABLE  
ROBUST

PLATEN DIAMETERS: 200 TO 250 MM

MINITECH 250 SP1

Ref. 66400

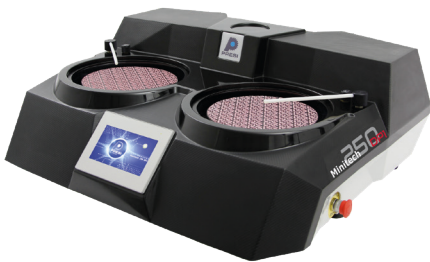


CE

330 mm 510 mm  
810 mm 35 kg

MINITECH 250 DP1

Ref. 66410

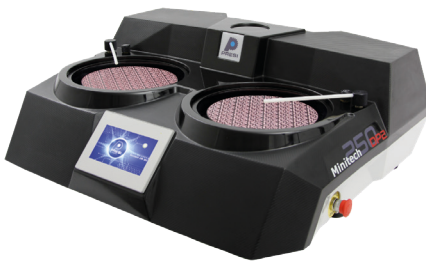


CE

330 mm 920 mm  
735 mm 50 kg

MINITECH 250 DP2

Ref. 66420



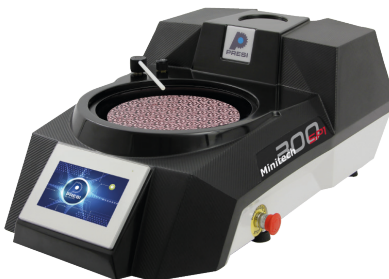
CE

330 mm 920 mm  
735 mm 58 kg

PLATEN DIAMETERS: 250 TO 300 MM

MINITECH 300 SP1

Ref. 66430

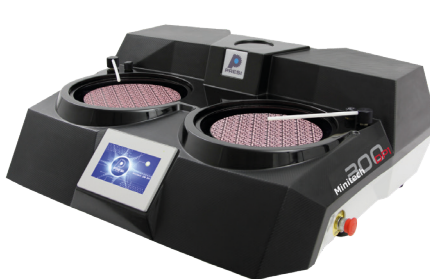


CE

330 mm 620 mm  
875 mm 42 kg

MINITECH 300 DP1

Ref. 66440

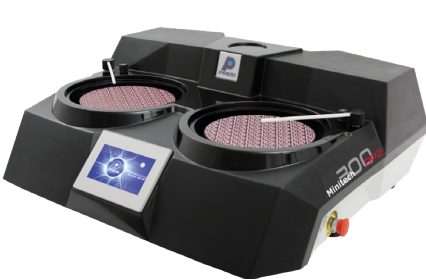


CE

330 mm 1100 mm  
810 mm 60 kg

MINITECH 300 DP2

Ref. 66450



CE

330 mm 1100 mm  
810 mm 70 kg

CHARACTERISTICS

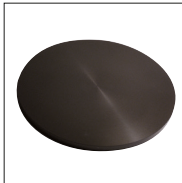
MINITECH	250 SP1	250 DP1	250 DP2	300 SP1	300 DP1	300 DP2
References	66400	66410	Réf. 66420	66430	66440	66450
Number of platens	1	2	2	1	2	2
Number of motors	1	1	2	1	1	2
Diameter of the polishing platen	200 to 250 mm	200 to 250 mm	200 to 250 mm	250 to 300 mm	250 to 300 mm	250 to 300 mm
Rotation speed (in increment of 1RPM)	20 to 700 RPM	20 to 700 RPM	20 to 700 RPM	20 to 700 RPM	20 to 700 RPM	20 to 700 RPM
Rotation direction : clockwise & counter-clockwise	✓	✓	✓	✓	✓	✓
Timer	✓	✓	✓	✓	✓	✓
Speed display	✓	✓	✓	✓	✓	✓
Time display in seconds	✓	✓	✓	✓	✓	✓
Display of applied force	✓	✓	✓	✓	✓	✓
Memorizing settings	✓	✓	✓	✓	✓	✓
Watering by multijet ramp	✓	✓	✓	✓	✓	✓
Nominal power S1	750 W	750 W	750 W	900 W	900 W	900 W
Nominal power S3	1100 W	1100 W	1100 W	1500 W	1500 W	1500 W
600 RPM spin function	✓	✓	✓	✓	✓	✓
High engine torque	✓	✓	✓	✓	✓	✓
Constant speed of the platen	✓	✓	✓	✓	✓	✓
Immediate stop of the platen	✓	✓	✓	✓	✓	✓
Bearing transmission	✓	✓	✓	✓	✓	✓
Over-bowl	✓	✓	✓	✓	✓	✓
Progressive acceleration of the platen	✓	✓	✓	✓	✓	✓
Splash guard	✓	✓	✓	✓	✓	✓
Power supply*	230 VAC	230 VAC	230 VAC	230 VAC	230 VAC	230 VAC
Frequency	50 - 60 Hz	50 - 60 Hz	50 - 60 Hz	50 - 60 Hz	50 - 60 Hz	50 - 60 Hz
Max. current	8 A	8 A	8 A	8 A	8 A	8 A

\* possibility 110 VAC : 50 - 60 Hz

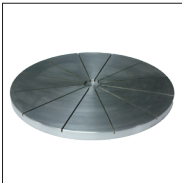
ACCESSORIES



Drive platen with aluminium positioners  
Ref. 56350 Ø 196 mm  
Ref. 67221 Ø 245mm



Almagtech platen  
Ref. 67822 Ø 200mm  
Ref. 67820 Ø 250mm  
Ref. 67821 Ø 300mm



Flat cast iron plate\*  
Ref. 57203 Ø 200mm  
Ref. 57213 Ø 250mm  
Ref. 57223 Ø 300mm



Circular paper holder (metal)  
Ref. 56054 Ø 200mm  
Ref. 56055 Ø 250mm



Circular paper holder (PVC)  
Ref. 56067 Ø 200mm  
Ref. 56068 Ø 250mm  
Ref. 56069 Ø 300mm



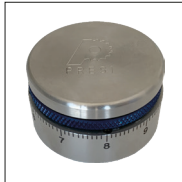
PVC platen with cone housing  
Ref. 56066 Ø 230mm  
Ref. 56062 Ø 250mm  
Ref. 57163 Ø 300mm



Full PVC platen with machined cone  
Ref. 56053 Ø 200mm  
Ref. 56063 Ø 250mm  
Ref. 56064 Ø 300mm



PVC lid  
Ref. 66050 Ø 250 mm  
Ref. 66025 Ø 300mm



Precise Holder for thin section 30x45 mm  
Ref. 62862



Precise Holder for thin section 28x48mm  
Ref. 62863

\* Machining of helicoidal, cross-hatched or radial cast iron plates on request.

LAPPING

3

POLISHING

7

# MECATECH 300 SPC

Ref. 67940

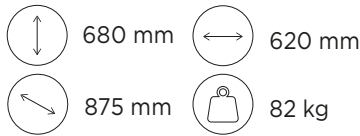
The MECATECH 300 SPC integrates the most advanced technologies for easy use.

Its removable **over-bowl** allows easy **maintenance**. In geology version, this polishing machine has a **speed range suitable for working with thin sections**.



**OPTIMAL POLISHING QUALITY  
POWER AND AUTOMATIC  
RELIABILITY**

CE

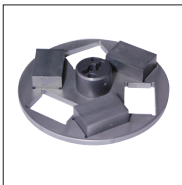


# CHARACTERISTICS

MECATECH	300 SPC
Reference	67940
Number of motors	1
Number of polishing platens	1
Diameter of the polishing platen	250 to 300 mm
Rotation speed	20 to 700 RPM
Rotation direction : clockwise and counter-clockwise	✓
Nominal power S1	900 W
Nominal power S3	1500 W
Torque compensation	Automatic
Immediate stop of the platen	Automatic
Progressive acceleration of the platen	Automatic
Drying function	600 RPM
Spindle on bearing	✓
Base platen + anti-vibration seals	✓
Additional removable bowl	✓
Splash guard	✓
High strength mechanically welded + painted steel chassis	✓
Body RIM injection	✓
16/9 color TFT LCD touch screen 7"	✓
Simplified service and maintenance without dismantling	✓
Power supply	230V 1P
Frequency	50 - 60 Hz
Max current	8A
Air pressure	5-10 bars
Water inlet	Ø 12 mm
Water outlet	Ø 32 mm
Compressed air	Ø 10 mm

POLISHING HEAD	300 SPC
Individual pressure	✓
Central pressure	✓
Mounted / Non mounted samples	✓
Rectangular samples	✓
Rotation speed	20 to 150 RPM
Rotation direction : clockwise & counter-clock.	✓
Motor power	270 W
Force per specimen	0,1 - 5 daN
Maximum power available	30 daN
Material removal measurement with auto. stop	✓
Force controlled electronically	✓
Force reduced at start and end of cycle	✓
50mm lowering and raising of the head	✓
Automatic locking of the head	✓
200cc (x2) lubricant included in the head	✓

# SPECIMEN HOLDERS\*



Ref. 62851  
Specimen holder for individual pressure for 6 thin sections 30x45mm



Ref. 62872-62873  
Specimen holder for double contact holder for thin section 30x45mm



Ref. 62861  
Specimen holder for Precise Holder

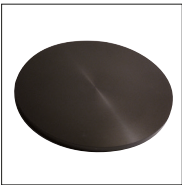


Ref. 62862  
Precise Holder for thin section 30x45mm

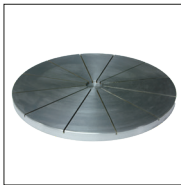


Ref. 62863  
Precise Holder for thin section 28x48mm

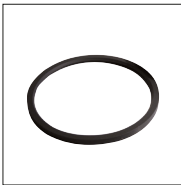
# ACCESSORIES



Ref. 67821  
Almagtech platen Ø 300mm



Ref. 57223  
Flat cast iron plate\* Ø 300mm



Ref. 56069  
Circular paper holder (PVC) Ø 300mm



Ref. 57170  
Waste recovery tray for polishing machine



Ref. 66025  
PVC lid Ø 300mm



Ref. 67750  
Ultra-quiet air compressor, 24L tank. Dimensions (WxDxH) 400x400x600mm



Ref. 67890  
Distritech 5.1 : abrasive suspensions dispenser device

\* Machining of helicoidal, cross-hatched or radial cast iron plates on request.

# MECATECH 334 SPC

Ref. 67960

A simplified version of a single station automatic polishing machine is also available.

LAPPING

3

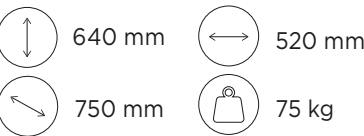
POLISHING

7



**CONTACT US FOR  
MORE INFORMATION**

CE





### VIBROTECH 300

Ref. 68100

The VIBROTECH 300 is a **reliable and robust vibratory polishing machine**, suitable for polishing consumables in Ø300 and 305mm.

Vibratory polishing is an **ultra-soft technique, suitable for super-finishing stages**. This polishing method improves the results of EBSD and AFM analyzes.

**EFFICIENT**  
**ROBUST**  
**SILENT**



- 676 mm opened hood
- 715 mm
- 554 mm
- 90 kg



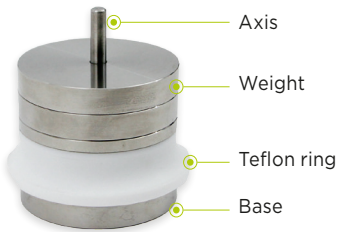
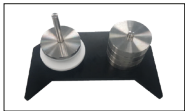
### CHARACTERISTICS

Ø polishing bowl	Ø 308mm
Sample polishing ability	Up to 21 simultaneous
Polishing cloths	Ø 300 to 305 mm
Suitable polishing clothes	Adhesive or PAD-Mag
Vibration frequency	80-110 Hz
Rotation direction	Clockwise
Vibration bowl power	519W
Power supply	230 VAC
Frequency	50-60 Hz
16/9 color TFT LCD touch screen 7"	✓
Hood	Transparent
Progressive acceleration	✓
Interchangeable polishing bowls	✓

### SAMPLE HOLDER

+ levelling plate

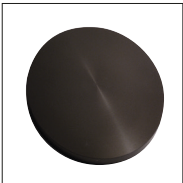
REF.	DIAMETER
68110	Ø 25 mm
68111	Ø 25,4 mm
68112	Ø 30 mm
68113	Ø 31,7 mm
68114	Ø 38,1 mm
68115	Ø 40 mm
68116	Ø 50 mm



### ACCESSORIES



Ref. 68105  
Polishing bowl



Ref. 24055  
Reflex MAG  
Ø300mm with  
slot for Vibrotech

### SAMPLE HOLDER

CHARACTERISTICS (in g)	Ø 25 Ø 25,4	Ø 30 Ø 31,7	Ø 38,1 Ø 40	Ø 50
Weight of the rack	360	425	545	675
Max. capacity weight	4	4	4	4
Weight per unit	150	180	255	340
Sample holder max. weight	960	1145	1565	2035

### THIN SECTION CONTROLLER

Ref. 62802

The controller measures the thickness of a thin section during preparation.

### CHARACTERISTICS

Type of table	Granite
Table dimensions	180x120mm
Table thickness	50mm
Column length	160mm
Column diameter	30mm
Gauge travel	12.7mm
Resolution	1µm
Accuracy	3µm
Lifting cable	300mm



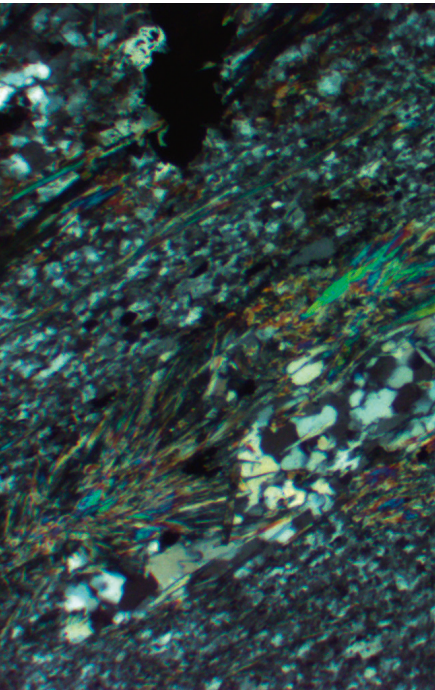
### MICROSCOPES

Ref. 62803 - 62804

Polarised light microscopes control thin section thickness and flatness.



	MONOCULAR MICROSCOPE	BINOCULAR MICROSCOPE
Number of eyepieces	1	2
Inter-pupil distance	-	55-75mm
Number of lenses	3	3
Lenses	4X / 10X / 40X	4X / 10X / 40X
Table	Rotating 360°table with holding clip	Rotating 360°table with holding clip
Table diameter	135 mm	135 mm
Z axis movement	18 mm	18 mm
Polarize / analyze	Yes	Yes
Type of lighting	Transmission	Transmission
Illumination	Variable-intensity LED	Variable-intensity halogen
Transformer	Internal	Internal
Power supply	220-240V AC 50Hz	220-240V AC 50Hz
Option	20X lens	20X lens
Dimensions WxDXH(mm)	173x220x372	172x220x372
Weight	4,6 kg	4,8 kg

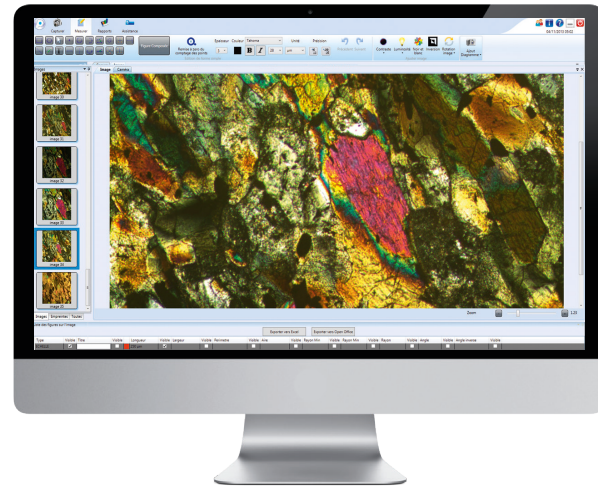




## PACK PRESI VIEW MESURE

Ref. 71101

- Dimensional control on cut samples, paint layers, coatings, etc.
- Lengths, thickness, markers, angles, etc.
- Radius, diameters, perimeters, areas, circles, bow circles, etc.
- Text areas insertion, titles and arrows, etc.
- User friendly, made to take, treat and edit pictures
- Ergonomic and customizable interface, easy to use for all users.
- Full HD camera (monochromatic digital camera or USB2 color, equipped with CMOS" sensors with Rolling or Global Shutter according to the model) and very fluid during motions.
- 5 camera entries
- Customizable commentaries
- Saving in many formats
- Pictures insertions in reports
- "PIP" function



A wide range of high-end microscopes is also available.

**CONTACT US FOR  
MORE INFORMATION.**



## ALL FOR THE PETROGRAPHY

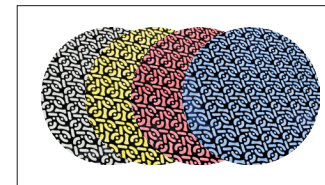
### CONSUMABLES

PRESI manufactures and sells a wide range of consumables suitable for petrography: cut-off wheels, diamond discs, abrasive for lapping, polishing cloths, diamond suspensions.

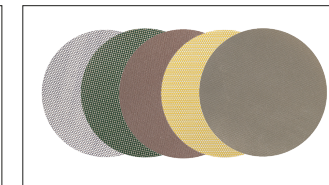
Check out our complete range of consumables in our **GLOBAL OFFER CATALOGUE.**



#### DIAMOND DISCS

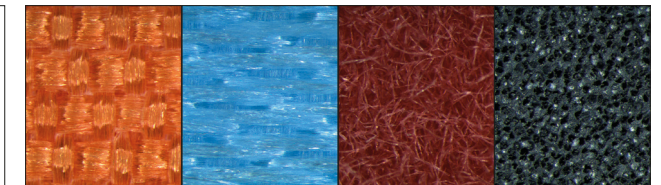


**I-MAX R**  
from 18µ to 125µ



**Tissediam**  
from 10µ to 250µ

#### POLISHING CLOTHS



**TOP**  
Ø300mm

**RAM**  
Ø300mm

**NT**  
Ø300mm

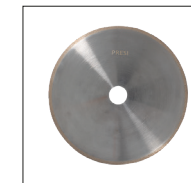
**SUPRA**  
Ø300mm

#### ABRASIVE FOR LAPPING



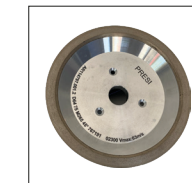
**Carbure de silicium**  
17µ / F400

#### CUT-OFF WHEELS



**Diamant LM**  
Ø250 / Ø300mm

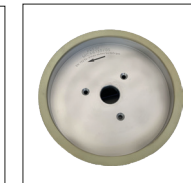
#### CUP WHEELS | Ø175mm x 25,4 mm



**Conic D64**  
Metallic binder



**Standard D40**  
Resinoid binder



**Standard D25**  
Vitrified binder

#### DIAMOND SUSPENSIONS



**Monocrystalline & Polycrystalline**  
from 1/4µ to 15µ  
Also available with oil and alcohol basis.

#### DIAMOND STICKS



**Monocrystalline & Polycrystalline**  
from 1/4µ to 25µ

#### DIAMOND PASTES



**Monocrystalline & Polycrystalline**  
from 1/4µ to 45µ

### ACCESSORIES

Many accessories are also available: glass blades and slats, bonding resin, glass plate, bi-composite epoxy glue, magnetic base, etc.



**WWW.PRESI.COM**

